

**Pre-Arrival Session
For New International
Students**



WELCOME TO FIU!

Congratulations!



AGENDA

- Visa Information
- Pre-Arrival Information
- Course Requirements
- Travel Information
- Check-In Process
- Welcome Session



YOUR WEBSITE OF REFERENCE!



Welcome to Florida International University!



At this point, you should have received your acceptance letter and FIU I-20 or DS-2019. If you have not, please contact the **Admissions Office**.

Pre-Arrival Information

Please make sure you read all this information **BEFORE** you embark on your academic journey to the United States!

+ Before you arrive in the U.S.

+ Arrival in the U.S.

+ Arrival at Florida International University

+ Immigration & Enrollment Policies



For in-depth information about Studying in the United States, access the free "Getting Ready To Go" Booklet.



For more information, visit **Homeland Security - Study in the States**.

- [FIU Pre-Arrival Information](#)

- [Getting Ready to Go](#)

Staying Home For Summer 2021?

ARE YOU A NEWLY ADMITTED STUDENT CURRENTLY IN YOUR HOME COUNTRY?



- If decide not to come to FIU in the Summer semester
- You are unable to travel due to travel restrictions or delays getting your visa, you **MUST** contact the **Office of International Admissions** to let them know. You may contact admissions via:
 - iadmiss@fiu.edu
 - **WhatsApp: +1(786)702-0031** – Students should send a message to set up an appropriate time for a phone call.
- If you have submitted a **Housing** contract to live at the FIU Residence Halls and you need to change your arrival date or cancel, please contact the Housing Office directly at housing@fiu.edu
- Remaining overseas – may not engage in on-campus employment – GAs
- You will be able to begin your studies overseas fully online
- **FIU programming –Back to Pre- Covid Modality: If you come to Miami/FIU must enroll full-time; limit one online class**

Visa Challenges



- Difficult to get visa appointments at some Consular sections or US embassies around the world, limited in-person services
- To stay informed
- A great resource is <https://studyinthestates.dhs.gov/covid-19-resources>

Here you will find many resources to consult about the F-1 process during the COVID 19 crisis.

- Your Embassy <https://www.usembassy.gov/>
- **FIU is reverting back to pre-COVID class instructions; therefore all Pre-COVID USCIS enrollment requirements are in effect – Full-time; limit one online class (hybrid accepted as on-campus or in person)**

Before you arrive in the U.S.

IMPORTANT STEPS



1- Receive your FIU I-20 or DS 2019

2- Pay SEVIS I-901 Fee

www.fmjfee.com

Print your receipt as proof of payment.



3- Obtain a Student Visa

- Schedule an appointment at a U.S. embassy or consulate in your home country to apply for an F-1 student visa or J-1 exchange student visa.
- You will need FIU I-20 or DS2019; Passport, SEVIS fee receipt, Financial documents
- Please check with Embassy for other requirements and forms

DO NOT ENTER IN B-1/B-2 STATUS OR Visa Waiver



VISA Process



- An F-1 visa can be issued no more than 120 days before the reporting date listed on Form I-20, but a student can enter the U.S. no earlier than 30 days before I-20 program start date. *General rule: apply as early as possible*
- An applicant applying for a student visa must meet the following requirements in order to qualify for a student visa:
 - Acceptance at a school as evidenced by a Form I-20
 - **Present intent to leave the United States at conclusion of approved activities**
-indicate non-immigrant intent. A consular officer must be satisfied that the applicant for an F-1 visa will depart the U.S. after finishing studies, and that he or she has a residence abroad that he or she does not intend to abandon.
 - Possession of sufficient funds to meet the individual's financial needs
 - Preparation for course of study
 - Fail to meet one or more of the above criteria, he or she must be refused a visa under INA 214(b).

Visa Interview

Very Useful Video:

How to Apply for Your F-1 Student Visa



Useful Information:

The burden of proof is on you personally to show that you intend to return to your country of residence after your studies. The best thing that you can do is to clearly articulate

- **Why you want to go to the specific school**
- **How you plan to use your education when you return.**
- **Why have you chosen this university?**
- **Who will sponsor your education?**
- **Do you intend to work in the U.S.?**
- **What was your TOEFL score?**
- **Also important, as for any first conversation, is to dress nicely and smile.**



Traveling to the United States



As you know, travel has become one of the complex matters to look out for. We highly recommend that you read the information on these links to be prepared for the requirements that you may be expected to comply with before, during your trip, and once you arrive in the United States. **It is your RESPONSIBILITY to be up to date with the latest information.**

- [International arrival requirements and other travel info](#)
- [National Interest Exception \(NIE\) Information](#)
- [COVID-19 Vaccine Information](#)



On-Campus or Off-Campus Housing



ON-CAMPUS HOUSING

- Make housing arrangements **before** your arrival.
- Space is limited- Apply early <http://housing.fiu.edu/>
- F-1- On campus or Off campus

OFF-CAMPUS HOUSING

<https://www.fiuoffcampushousing.com>

<http://classifieds.fiu.edu/>



SHORT-TERM HOUSING

[Check out the Area Hotels](#)

Location nearest: Modesto Maidique Campus Zip Codes - 33172 and 33174;
Biscayne Bay Campus zip codes include 33181 and 33160.

Prepare for Money Matters



Expenses may include, but are not limited to:

- FIU Tuition & Fees*
- Medical Insurance Payment
- Books and school supplies
- On campus housing or off campus rent



RENT: you may be required to pay a security deposit plus two months' rent before you move in.



Money Matters



Visit this link to learn about payments to FIU

<https://onestop.fiu.edu/finances/pay-for-tuition/how-to-pay/>



Medical Requirements



Immunizations and Health Insurance managed by Student Health Services:

- Please visit the [Medical Insurance link](#) on the ISSS Website
- You are **REQUIRED** to have medical insurance that is approved by FIU
- May not enroll in classes without health insurance.

<http://healthservices.fiu.edu/>



Arriving in the United States



Miami International Airport (MIA) MMC Campus

<http://www.miami-airport.com/>

Fort Lauderdale International Airport (FLL) BBC Campus

<http://www.fortlauderdaleinternationalairport.com/>



- **When to arrive:** No more than **30 Days** before program start date on your I-20
- **What to bring to the U.S.?**

Immigration Documents: FIU I-20/DS2019 passport with F-1 visa

Do not pack these documents in your checked luggage!

Packing



In your carry-on luggage:

- A change of clothes and essentials in case your luggage is lost or delayed – remember TSA restrictions on liquids
- <http://www.tsa.gov/>
- Medication you may need right away
- Contact information for someone in the U.S. and for FIU

Checked luggage

(Extra fees for overweight bags)



Packing



Other things to consider:

- Place clear labels with your name and address both inside and outside each piece of luggage.
- Make several copies of your important documents and pack them in different places in case one bag is lost.
- Consider pre-arranging your transportation from the airport. Maybe done online w/various vendors



Arrival in the U.S.



- **Port of Entry:** U.S. Customs and Border Protection (USCBP)
- Be ready! You will be asked to show:
 - Passport
 - F-1 visa or J-1 visa
 - FIU I-20 or DS 2019

ONLY answer
the questions you are asked!



PORT OF ENTRY: Important Information



- **PRIMARY INSPECTION**
- **SECONDARY INSPECTION**

Immigration Emergency at the Port of Entry?

Need to talk to someone at FIU?

Call 305-348-2421

(Somebody will answer 24/7)



PORT OF ENTRY: Important Information



- **Electronic devices** (phone/computer/I-Pad) are subject to search
- Your **Social Media** accounts may be inspected
- **Bring as much information as possible**
 - Passport/I-20; DS 2019
 - F-1/J-1 visa
 - Financial documents
 - Proof of admission/registration



Get to FIU



FIU/ISSS does NOT provide transportation

- Taxi, Super Shuttle –curbside at Airport arrival/luggage pick up - (on campus housing, hotel, off campus housing)
- MMC OR BBC addresses:

MMC: 11200 SW 8th Street Miami, FL 33199

BBC: 3000 N.E. 151st Street North Miami, FL 33181



Arrival at Florida International University

YOU MUST CHECK IN



using the New Panther Portal

Have the following items to upload:

- Passport
- Visa; F-1 or J-1
- I-94, <https://i94.cbp.dhs.gov/I94/#>
- I-20; DS 2019
- Local U.S. Address (PO Boxes are not acceptable)
- Foreign Address
- Name and Phone # for an Emergency Contact
- Certificate of Completion of Virtual Information Session

**PLEASE READ YOUR FIU E-MAIL FOR SPECIFIC
CHECK-IN INSTRUCTIONS AND ACCESS INFORMATION!**



Office Hours

8:30am – 5:00pm,
Monday – Friday
(closed weekends
and holidays)

FIU Student Orientations



Please check the website and your emails for Orientation Sessions for you (from your Program or Orientation Office)



International Student Welcome Sessions



Upcoming WELCOME SESSION:

FRIDAY, August 20 (9:00 am to 11:30 am)

Visit the **ISSS Website** to RSVP for this session!



Enrollment



F-1 Status- enrollment

Summer, Fall and Spring A , B, C –Enrolled FT first week of classes

Undergraduate: **12** credit hours = Full-time

Graduate: **9** graduate credit hours = Full-time

Online classes: **1** class (3 credits) toward full-time

new and transfer students = FT summer enrollment

Formula:

UG: 9 credits on campus + 3 credits online = 12 credits

Grad: 6 credits on campus + 3 credits online = 9 credits



State of Florida Driver's License



To drive legally in the state of Florida you must get a Florida driver's license.

The Division of Motor Vehicles will not issue a license until your F-1 SEVIS record is ACTIVE.

You must complete the new student virtual check-in via the FIU ISSS Portal to initiate setting your record to active

Due to USCIS limitations – your SEVIS record may not be set to active until the semester starts and this registration is performed in the order that virtual check in occurred. You will receive an email notification from ISSS confirming your record is active. You must then wait 48 hours before visiting the DMV

For more information visit:

<http://www.dmvflorida.org/drivers-license-nc.shtml>

Social Security Card



Only issued if you have authorized employment

Read the information on our website:

<https://iss.fiu.edu/international-students/current-f-1-students/social-security/>



Contact ISSS



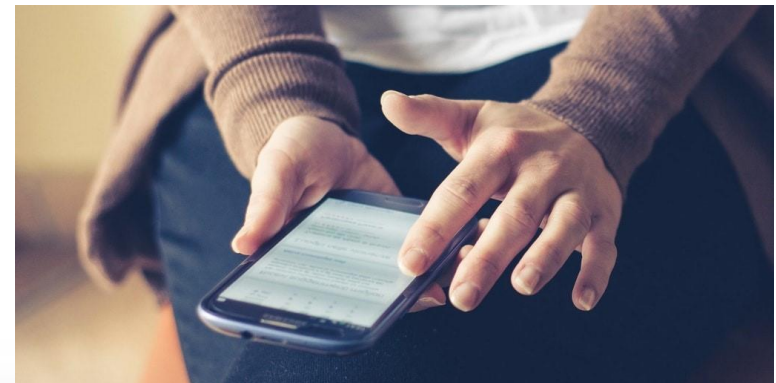
go.fiu.edu/virtualoffice



go.fiu.edu/appointment



iss@fiu.edu



305-348-2421 (24/7)

For ALL Requests





FIU ISSS

 Secure Online Session

FIU ISSS Services Home Page

The Office of International Student and Scholar Services (ISSS) welcomes all international students at FIU!

At the ISSS Office we want to make sure you have a positive and productive experience as you become an integral part of our community and beyond. We are committed to your academic, professional, and personal success as you pursue your studies in the United States and are here to support you through out that endeavor.

For New Students ONLY:

- If you are an **F-1 student**, please use the **New Panther** link to check -in.
- If you are a **J-1 exchange student**, please use the **J-1 Student Services** link to check -in.

All Students:

Please confirm that your **Biographical Information** from the menu on the left is correct.

SEVIS Status Information	Options
SEVIS ID: Status: Level: Program Start: Program End:	<input type="checkbox"/> View cases closed before today <input type="checkbox"/> View correspondence and notes older than 60 days

FIU ISSS Home Page

- Biographical Information
- Document Request
- F-1 Practical Training Applications
- F-1 Practical Training Reporting
- F-1 Student Services
 - Biographical Updates
 - Letters & Certifications
 - Fall 2020 Reporting
 - Immigration Documents Upload
 - Concurrent Enrollment
 - RCL Last Term Upload
 - Reduced Course Load for Completion of Degree
- F-1 Transfer
- F-2 Dependent(s)
- New Panther
- Logout of FIU ISSS

Please use our ISSS Portal
go.fiu.edu/portal

ISSS Social Media



FIUISSS



FIU ISSS



@FIUISSS

What to do list



HOLDS : Will prevent you from enrolling in classes

- **IMI** – Health Insurance
- **RMI** – Immunization
- Contact Student Health Services
<http://healthservices.fiu.edu>



- **Register for Classes**

- <https://my.fiu.edu/>
- OSA will facilitate registration for exchange students

WHAT TO DO List



- **CHECK IN WITH ISSS –Virtual online check-in**
- **Pay Tuition and Fees**
- **Payment Deadline:** see FIU academic calendar
- **Get your FIU One Card:**
- **Set Up your FIU Account and Email Address:**
<https://my.fiu.edu/>
- **Tech Info:** <https://it.fiu.edu/>
- **Open a Bank Account**



See you soon!





ຂໍຂອບໃຈທ່ານ ສຸຂອບໃຈທ່ານ ວັນຍາວາດ ວິ ບຸລາດາຣິມິ ຂໍຂອບໃຈທ່ານ
nirringrazzjak شُكْرًا taşekkür köszönöm grācijas
di ou mési dank je gratias agimus tibi 谢谢 kiitos
nirringrazzjak dank je dankon danke gracias
aitäh dankon danke gracias
thank you
ありがとう ありがとう danke gracias
ααα ευχαριστώ danke gracias
ଆଭୈର danke gracias
dziękuję ngiyabonga danke gracias
ДЗЯКУЙ go raibh maith agat danke gracias
धन्यवाद danke gracias
buíochas a ghabháil leat danke gracias
တောင်းပန်စာတောင်း danke gracias
তোমাকে ধন্যবাদ danke gracias
sukriya terima kasih takk
d'akujem diolch i chi falemnderit
asante hvala kop khun krap ačiū
multumesc obligado