

**Pre-Arrival Session  
For New International  
Students**





# Admission Information



- If you have not been fully admitted
- If you are waiting for your I-20

**PLEASE CONTACT THE OFFICE OF  
INTERNATIONAL ADMISSIONS**

**[iadmiss@fiu.edu](mailto:iadmiss@fiu.edu)**

**One Stop- +1-305-348-7000**

OUR WEBSITE!

iss.fiu.edu



## Office of International Student & Scholar Services

About ▼ International Students ▼ Visiting Scholars ▼ Medical Insurance Finances & Taxes ▼ ISSS Portal ▼

**FIU Coronavirus Advisory** – Visit our [Panthers Protecting Panthers website](#) and our [Federal Relief page](#) for updates.



# YOUR WEBSITE OF REFERENCE!



Welcome to Florida International University!



## Before you arrive in the U.S.

- Pay SEVIS I-901 fee
- Obtain a student visa
- Arrange either on-campus or off-campus housing
- Take care of medical requirements (immunizations & insurance)
- Sexual assault prevention program
- Prepare for money matters
- Prepare for travel

- [FIU Pre-Arrival Information for F-1 Students](#)
- [FIU Pre-Arrival Information for J-1 Students](#)
- [Getting Ready to Go](#)

# Contacting ISSS



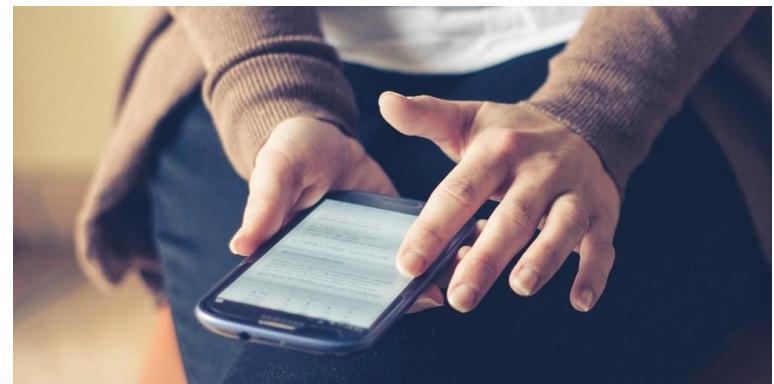
[go.fiu.edu/virtualoffice](https://go.fiu.edu/virtualoffice)



[go.fiu.edu/appointment](https://go.fiu.edu/appointment)



[iss@fiu.edu](mailto:iss@fiu.edu)



305-348-2421 (24/7)

# For ALL Requests



**FIU INTERNATIONAL STUDENT AND SCHOLAR SERVICES (ISSS)**

**PORTAL**

## International Student & Scholar Services

*The mission of the Office of International Student and Scholar Services is to promote campus internationalization by providing service excellence related to immigration compliance and procedures, and comprehensively supporting the academic, social, and professional success of all our international students and scholars to ensure their seamless integration into our university community.*

ISSS Portal provides a variety of online services for our institution's international students and scholars and for the staff that supports them. Please log in using one of the options below to view information or to make a request.

### Current Students, Faculty, or Staff

For full access to your international services account, please log in.

[Login](#)

**Please use our ISSS Portal**  
**[go.fiu.edu/portal](https://go.fiu.edu/portal)**

# ISSS Social Media



**FIUISSS**



**FIU ISSS**



**@FIUISSS**



# Traveling to the United States



Be prepared for the requirements that you may be expected to comply with before, during your trip, and once you arrive in the United States. **It is your RESPONSIBILITY to be up to date with the latest information.**

- [International arrival requirements and other travel info](#)



# WHAT YOU NEED TO KNOW



- You **must be fully vaccinated** to travel to the United States by plane if you are a non-U.S. citizen, non-U.S. immigrant (not a U.S. citizen, U.S. national, lawful permanent resident, or traveling to the United States on an immigrant visa). Only limited exceptions apply.
- **YOU MUST ACCESS THE TRAVEL INFORMATION ON OUR WEBSITE!**

# Visa Challenges



- Difficult to get visa appointments at some Consular sections or US embassies around the world, limited in-person services
- To stay informed
- The American Embassy in your country  
<https://www.usembassy.gov/>
- **FIU has reverted back to pre-COVID class instructions; therefore all Pre-COVID USCIS enrollment requirements are in effect – Full-time; limit one online class (hybrid accepted as on-campus or in person)**

# Before you arrive in the U.S.



## IMPORTANT STEPS

1- Receive your FIU I-20 or DS 2019

2- Pay SEVIS I-901 Fee

[www.fmjfee.com](http://www.fmjfee.com)

Print your receipt as proof of payment.



3- Obtain a Student Visa

- Schedule an appointment at a U.S. embassy or consulate in your home country to apply for an F-1 student visa or J-1 exchange student visa.
- You will need FIU I-20 or DS2019; Passport, SEVIS fee receipt, Financial documents
- Please check with Embassy for other requirements and forms

***DO NOT ENTER IN B-1/B-2 STATUS OR Visa Waiver***



# VISA Process



- An F-1 visa can be issued no more than 120 days before the reporting date listed on Form I-20, but a student can enter the U.S. no earlier than 30 days before I-20/DS-2019 program start date. *General rule: apply as early as possible*
- An applicant applying for a student visa must meet the following requirements in order to qualify for a student visa:
  - Acceptance at a school as evidenced by a Form I-20
  - **Present intent to leave the United States at conclusion of approved activities** -indicate non-immigrant intent. A consular officer must be satisfied that the applicant for an F-1 visa will depart the U.S. after finishing studies, and that he or she has a residence abroad that he or she does not intend to abandon.
  - Possession of sufficient funds to meet the individual's financial needs
  - Preparation for course of study
  - Fail to meet one or more of the above criteria, he or she must be refused a visa under INA 214(b).

# Visa Interview



The burden of proof is on you personally to show that you intend to return to your country of residence after your studies. The best thing that you can do is to clearly articulate

- Why you want to go to the specific school
- How you plan to use your education when you return.
- Why have you chosen this university?
- Who will sponsor your education?
- Do you intend to work in the U.S.?
- What was your TOEFL score?
- Also important, as for any first conversation, is to dress nicely and smile.

# On-Campus or Off-Campus Housing



## ON-CAMPUS HOUSING

- Make housing arrangements **before** your arrival.
- Space is limited- Apply early <http://housing.fiu.edu/>
- On campus or Off campus

## OFF-CAMPUS HOUSING

<https://www.fiuoffcampushousing.com>

<http://classifieds.fiu.edu/>



## SHORT-TERM HOUSING

[Check out the Area Hotels](#)

Location nearest: Modesto Maidique Campus Zip Codes - 33172 and 33174;  
Biscayne Bay Campus zip codes include 33181 and 33160.

# Prepare for Money Matters



Expenses may include, but are not limited to:

- FIU Tuition & Fees\*
- Medical Insurance Payment
- Books and school supplies
- On campus housing or off campus rent



**RENT:** you may be required to pay a security deposit plus two months' rent before you move in.





# Money Matters



Visit this link to learn about payments to FIU

<https://onestop.fiu.edu/finances/pay-for-tuition/how-to-pay/>



# Medical Requirements



## Immunizations and Health Insurance managed by Student Health Services:

- You are **REQUIRED** to have medical insurance that is approved by FIU
- May not enroll in classes without health insurance.

<http://healthservices.fiu.edu/>



# Arriving in the United States



## Miami International Airport (MIA) MMC Campus

<http://www.miami-airport.com/>

## Fort Lauderdale International Airport (FLL) BBC Campus

<http://www.fortlauderdaleinternationalairport.com/>



- **When to arrive:** No more than **30 Days** before program start date on your I-20
- **What to bring to the U.S.?**

Immigration Documents: FIU I-20/DS2019 passport with F-1 visa

*Do not pack these documents in your checked luggage!*

# Packing



## *In your carry-on luggage:*

- A change of clothes and essentials in case your luggage is lost or delayed – remember TSA restrictions on liquids
- <http://www.tsa.gov/>
- Medication you may need right away
- Contact information for someone in the U.S. and for FIU

## *Checked luggage*

(Extra fees for overweight bags)



# Packing



## Other things to consider:

- Place clear labels with your name and address both inside and outside each piece of luggage.
- Make several copies of your important documents and pack them in different places in case one bag is lost.
- Consider pre-arranging your transportation from the airport. Maybe done online w/various vendors



# Arrival in the U.S.



- **Port of Entry:** U.S. Customs and Border Protection (USCBP)
- Be ready! You will be asked to show:
  - Passport
  - F-1 visa or J-1 visa
  - FIU I-20 or DS 2019

**ONLY** answer  
the questions you are asked!



# PORT OF ENTRY: Important Information



- **PRIMARY INSPECTION**
- **SECONDARY INSPECTION**

## Immigration Emergency at the Port of Entry?

Need to talk to someone at FIU?

**Call 305-348-2421**

(Somebody will answer 24/7)



# PORT OF ENTRY: Important Information



- **Electronic devices** (phone/computer/I-Pad) are subject to search
- Your **Social Media** accounts may be inspected
- Bring as much information as possible
  - Passport/I-20; DS 2019
  - F-1/J-1 visa
  - Financial documents
  - Proof of admission/registration





# Get to FIU



## FIU/ISSS does NOT provide transportation

- Taxi, Super Shuttle –curbside at Airport arrival/luggage pick up - (on campus housing, hotel, off campus housing)
- MMC OR BBC addresses:

**MMC:** 11200 SW 8<sup>th</sup> Street Miami, FL 33199

**BBC:** 3000 N.E. 151st Street North Miami, FL 33181



# Arrival at Florida International University



## You **MUST** check-in using the **New Panther Portal**

### Have the following items to upload:

- Passport
- Visa; F-1 or J-1
- I-94, <https://i94.cbp.dhs.gov/i94/#>
- I-20; DS 2019
- Local U.S. Address (PO Boxes are not acceptable)
- Foreign Address
- Name and Phone # for an Emergency Contact
- Certificate of Completion of Virtual Information Session

**INITIAL/TRANSFER/CHANGE OF LEVEL STUDENTS:**

**YOU MUST CHECK IN WHEN YOU ARRIVE IN THE UNITED STATES (within 10 days of your arrival)**



### Office Hours

8:30am – 5:00pm,  
Monday – Friday  
(closed weekends  
and holidays)

# FIU Student Orientations



**Please check the website and your emails for Orientation Sessions for you (from your Program or Orientation Office)**



# International Student Welcome Sessions



**Upcoming WELCOME SESSION:**

**FRIDAY, August 19 (3:00 pm to 5:00 pm)**

**Visit the ISSS Website to RSVP for this session!**

Exchange students will have their own orientation on this date.  
Look for further communications from OEA for more information



# Enrollment- The Basics



## F-1/J-1 Status- enrollment

Summer, Fall and Spring A , B, C –Enrolled FT first week of classes

Undergraduate: **12** credit hours = Full-time

Graduate: **9** graduate credit hours = Full-time

Online classes: **1 class (3 credits)** toward full-time

**new and transfer students = FT summer enrollment**

### Formula:

UG: 9 credits on campus + 3 credits online = 12 credits

Grad: 6 credits on campus + 3 credits online = 9 credits



# FALL 2022 Enrollment



**PLEASE ALWAYS CHECK**

**Fall 2022 Information**

**on our ISSS Website!**



# State of Florida Driver's License



To drive legally in the state of Florida you must get a Florida driver's license.

The Division of Motor Vehicles will not issue a license until your F-1 SEVIS record is ACTIVE.

**You must complete the new student virtual check-in via the FIU ISSS Portal to initiate setting your record to active**

Due to USCIS limitations – your SEVIS record may not be set to active until the semester starts and this registration is performed in the order that virtual check in occurred. You will receive an email notification from ISSS confirming your record is active. You must then wait 48 hours before visiting the DMV

For more information visit:

<http://www.dmvflorida.org/drivers-license-nc.shtml>

# Social Security Card



**Only issued if you have authorized employment**

**Read the information on our website:**

**<https://iss.fiu.edu/international-students/current-f-1-students/social-security/>**







[go.fiu.edu/request-mentor](https://go.fiu.edu/request-mentor)

Do you want to meet new friends or learn about FIU from a peer?

**Join our**  
**ISSS INTERNATIONAL**  
**PEER MENTOR PROGRAM**

# What to do list



**HOLDS** : Will prevent you from enrolling in classes

- **IMI** – Health Insurance
- **RMI** – Immunization
- Contact Student Health Services  
<http://healthservices.fiu.edu>



- **Register for Classes**

- <https://my.fiu.edu/>
- OSA will facilitate registration for exchange students

# WHAT TO DO List



- **CHECK IN WITH ISSS –Virtual online check-in**
- **Pay Tuition and Fees**
- **Payment Deadline:** see FIU academic calendar
- **Get your FIU One Card:**
- **Set Up your FIU Account and Email Address:**  
<https://my.fiu.edu/>
- **Tech Info:** <https://it.fiu.edu/>
- **Open a Bank Account**



# Important for GRADUATE/TEACHING ASSISTANTS



## YOU MUST:

- Check in using the ISSS Portal (Activation may take up to 10 days)
- Apply for ON-CAMPUS Employment Authorization (5-7 business days)
- Get your SSN (may take up to 10 days)
- Work with FIU Human Resources
- Start Working

Important:

You **CANNOT** start this process before you arrive in the United States.



# Questions & Answers



We will accept questions at this time via chat  
Thank you and we look forward to seeing you at FIU!

**See you soon!**

